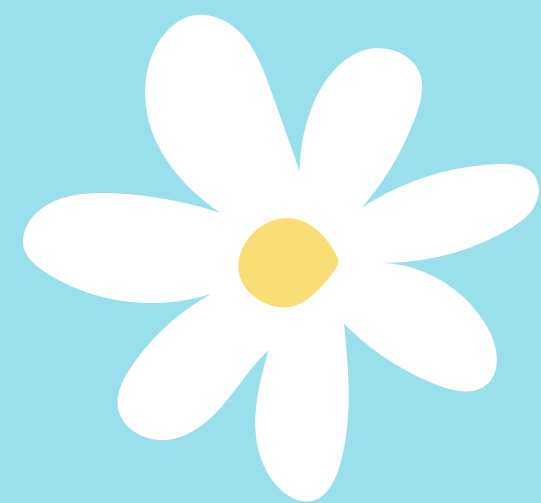
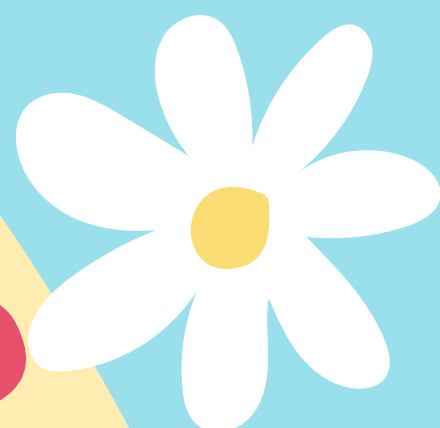


EASTER



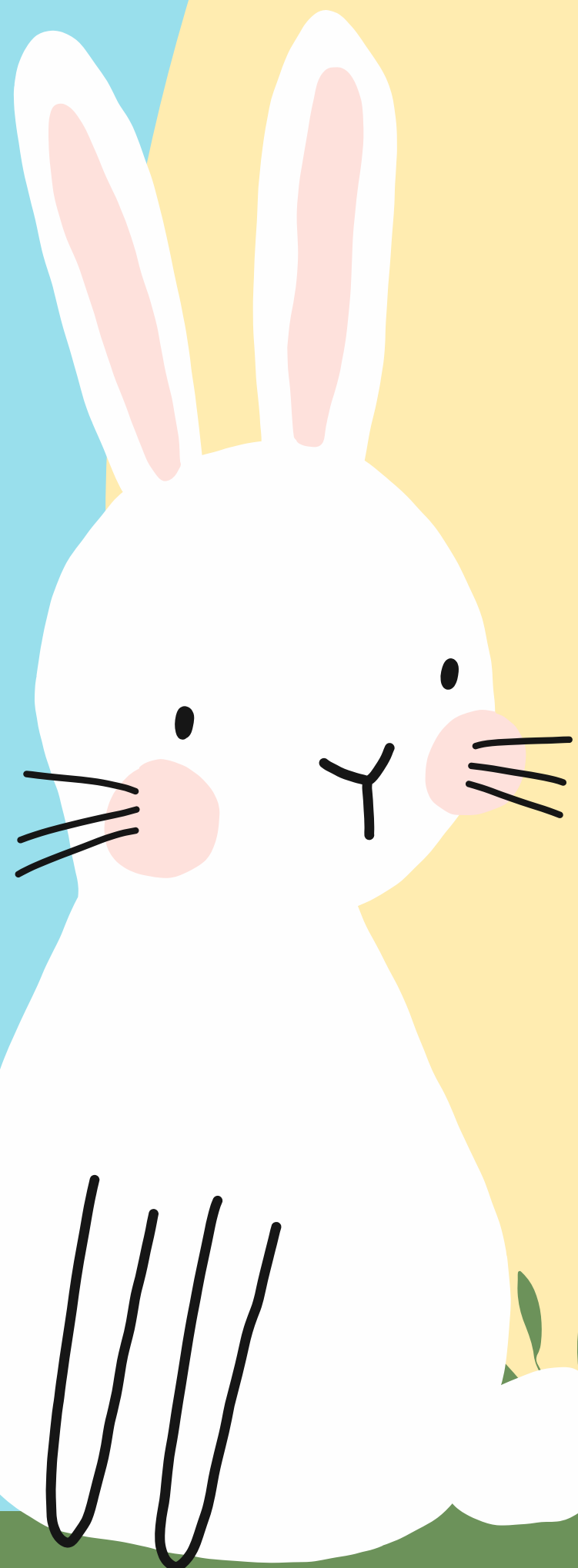
CHOCOLATE BINGO



**FRIDAY 15TH MARCH
6PM TO 8PM**

**4 GAMES
&
FLIER**

Chocolate donations would be gratefully appreciated. Please can these be in school by Friday 8th March.



**REFRESHMENTS ** RAFFLE ** STAFF
HAMPER**